

**Oracle Utilities Meter Data Management  
Release 2.0.1**

Utility Reference Model

3.3.2 Manage Service Agreement (Usage  
Subscription)

May 2012

Oracle Utilities Meter Data Management Utility Reference Model 3.3.2

Copyright © 2013, Oracle and/or its affiliates. All rights reserved.

This document is provided for information purposes only and the contents hereof are subject to change without notice. This document is not warranted to be error-free, nor subject to any other warranties or conditions, whether expressed orally or implied in law, including implied warranties and conditions of merchantability or fitness for a particular purpose. We specifically disclaim any liability with respect to this document and no contractual obligations are formed either directly or indirectly by this document. This document may not be reproduced or transmitted in any form or by any means, electronic or mechanical, for any purpose, without our prior written permission.

Oracle and Java are registered trademarks of Oracle and/or its affiliates. Other names may be trademarks of their respective owners.

Intel and Intel Xeon are trademarks or registered trademarks of Intel Corporation. All SPARC trademarks are used under license and are trademarks or registered trademarks of SPARC International, Inc. AMD, Opteron, the AMD logo, and the AMD Opteron logo are trademarks or registered trademarks of Advanced Micro Devices. UNIX is a registered trademark licensed through X/Open Company, Ltd. 0611

---

---

# Contents

## Contents

### Chapter 1

- Overview..... 1-1
  - Brief Description ..... 1-2
  - Business Process Diagrams..... 1-3
  - How to Read and Understand Process Diagrams..... 1-4



# Chapter 1

---

## Overview

This chapter provides a brief description of the Manage Service Agreement (Usage Subscription) business process and associated process diagrams. This includes:

- **Brief Description**
- **Business Process Diagrams**
- **How to Read and Understand Process Diagrams**

---

## Brief Description

**Business Process:** 3.3.2 MDM. Manage Service Agreement (Usage Subscription)

**Process Type:** Process

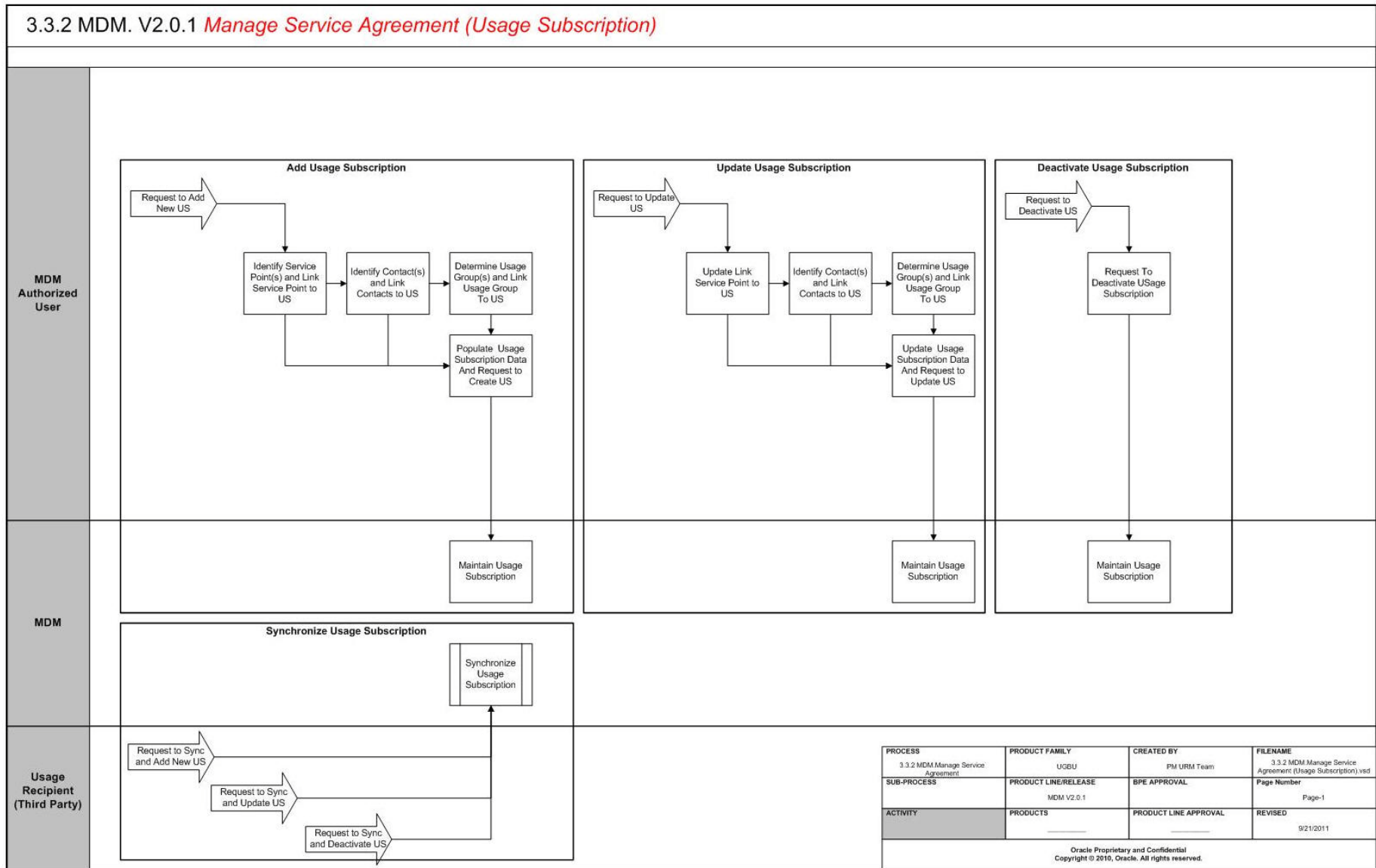
**Parent Process:**

**Sibling Processes:**

The process described in the document takes place when Service for the Customer should be established or modified and Service Points' usage should be sent to one or more external systems (such as a Billing system) in order to calculate the charges for the service.

Usage Subscription reflects specifics of the agreement between Service Company and Customer. MDM application determines and controls usage calculation and sending process for all the Service Points related to the Usage Subscription.

# Business Process Diagrams



# How to Read and Understand Process Diagrams

## Utility Reference Models. Notations.

